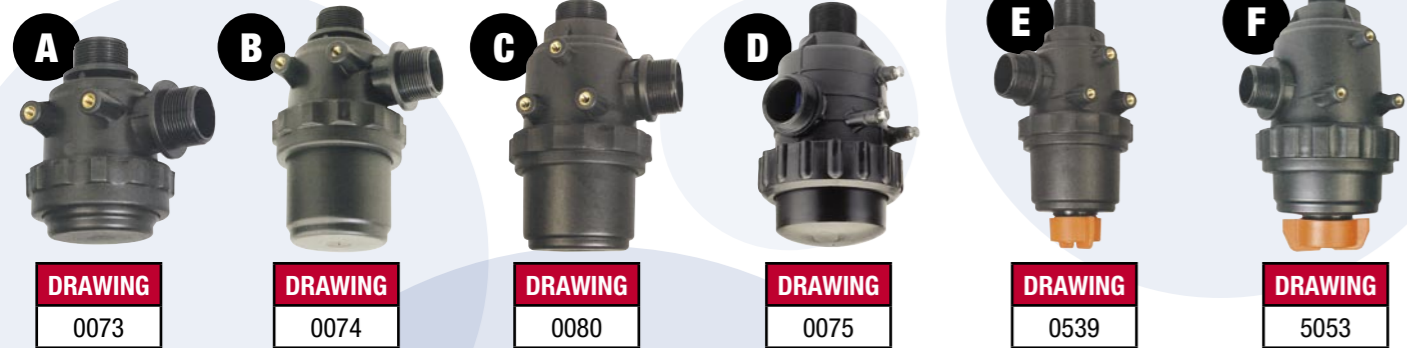


FILTRATION

SUCTION LINE FILTERS

Suction line filters provide filtration to remove larger particles of grit and are ideally mounted between the tank and pump. Feature 8 mm threaded brass inserts and mounting bolts for easy adaption to frames and chassis etc. Screw off bowl for easy cleaning. SAR2/V and SAR3/V models feature an auto shut-off action valve which closes off the supply line while removing element for cleaning. 50 mesh element is supplied standard. 16, 32 and 100 mesh elements are also available to suit most filters - please specify when ordering.



CODE	REF	FILTER TYPE	MESH SIZE	SHUT OFF VALVE	FLOW L/MIN	PORT SIZE BSP	MOUNT. INSERTS	WIDTH (mm)	HEIGHT (mm)	LIST (ex GST)	LIST (inc GST)	CAT
LSA-310058	A	SAR0	40	NO	UP TO 60	1 1/4"	2	107	163	\$33.91	\$37.30	B
LSA-312158	B	SAR1	40	NO	UP TO 100	1 1/4"	2	107	213	\$44.32	\$48.75	B
LSA-314163	C	SAR2	50	NO	UP TO 160	1 1/2"	3	122	233	\$78.00	\$85.80	B
LSA-316063	D	SAR3	50	NO	UP TO 250	1 1/2"	3	170	292	\$94.05	\$103.45	B
LSA-316173	D	SAR3	50	NO	UP TO 250	2"	3	170	292	\$94.05	\$103.45	B
LSA-314463	E	SAR2/V	50	YES	UP TO 160	1 1/2"	3	140	260	\$93.50	\$102.85	B
LSA-314563	E	SAR2/V	50	YES	UP TO 160	1 1/2"	3	122	278	\$94.41	\$103.85	B
LSA-316573	F	SAR3/V	50	YES	UP TO 220	2"	3	170	329	\$116.18	\$127.80	B

FLOATING SUCTION FILTER

This filter is designed to float a few centimetres beneath the water surface, thus preventing any obstruction due to the mud lying on the bottom or debris floating on the surface.



CODE	PORT SIZE	SIZE (mm)	LIST (ex GST)	LIST (inc GST)	CAT
G8062003A	1 1/2"	40	\$84.95	\$93.45	B
G8062003B	2"	50	\$84.95	\$93.45	B

HIGH VOLUME FILTER

Ideal for liquid storage tanks, irrigation or fertiliser systems. Filtering capacity up to 800 litres per minute. Built in flow deflector helps prevent cartridge clogging in the outlet area with sediment depositing at the base of the filter bowl allowing for easy cleaning through the drain plug. Features 1/4" BSP gauge ports on the inlet and outlet side. Maximum pressure 7.8 Bar (114 psi).



CODE	FILTER TYPE	MESH SIZE	SHUT OFF VALVE	FLOW L/MIN	PORT SIZE BSP	
335195	335	120 S/Steel	No	Up to 800	3" male	
INSERTS MOUNT.	WIDTH (mm)	HEIGHT (mm)	WEIGHT (GmS)	LIST (EX GST)	LIST (INC GST)	CAT
2	415	358	2.9	\$254.32	\$279.75	B

FILTRATION

FROGMOUTH FILTER



Code: The Frogmouth is a first stage filter that through its unique low maintenance design, removes leaves and gutter debris. It is fully closed, protecting the rainwater storage from mosquitoes and restricting light from entering that helps to reduce algae growth.

PLATYPUS FILTER



Code: The Platypus is a rainwater diverter to the pool or garden by simply turning the selector 90o (to the direction required). Platypus diverters can also be used to divert grey water from the laundry or bathroom

TADPOLE FILTER



Code: The Tadpole is a first stage filter designed for wet and dry systems. It has a 5.0mm and 0.9mm dual stainless steel filtration mesh housed in an enclosed casing to prevent biological growth and insect breeding (mosquitoes) No need to clean leaves and debris from basket type rainheads.

Replacemente Cartridge
Filter for Tadpole Code: CTP

WET FROG FILTER



Code: The Wet Frog second stage constant filtration system is the ideal solution for wet systems. It is designed as a completely sealed unit to filter through a 500 micron stainless steel mesh that removes fine silt that can damage washing machines when using rainwater from tanks.

Replacemente Cartridge
Filter for Wet Frog Code: CWF

LAZY LIZARD FILTER

Lazy Lizard is a final stage filter that works with the Frogmouth filter or other rain head type filters with a 0.9mm mesh. It features a 240 micron stainless steel mesh filter that removes materials such as pollen, sand and silt, ensuring cleaner water is delivered to washing machines and toilets, and helps prevent sediment build-up in hot water.

Replacemente Cartridge
Filter for Filter Lizard Code: CLL



Selecta Head Office
244-264 Greens Road
Dandenong South Vic 3175
PO Box 4453
Dandenong South Vic 3164
Telephone: (03) 9215 2795
Facsimile: (03) 9215 2796



FILTRATION PRODUCT GUIDE

TANK LIDS AND RINGS



LID RINGS

Two start threads for secure, positive fastening and sealing.

CODE	SIZE			HEIGHT (mm)	LIST (ex GST)	LIST (inc GST)	CAT
	A	B	C				
G8148000	255	218	192	38	\$11.86	\$13.05	B
G8154000	355	320	290	38	\$13.95	\$15.35	B
G8160000	455	415	382	35	\$16.91	\$18.60	B



LID STRAINERS

For prevention of large particles or debris entering tank.

CODE	SIZE (mm)	MESH (mm)	DIAMETER (mm)		HEIGHT	LIST (ex GST)	LIST (inc GST)	CAT
			INSIDE	OUTSIDE				
G8147002	255	20	188	200	240	\$29.77	\$32.75	B
G8153001	355	20	286	300	254	\$38.64	\$42.50	B
G8159000	455	20	378	398	160	\$40.55	\$44.60	B

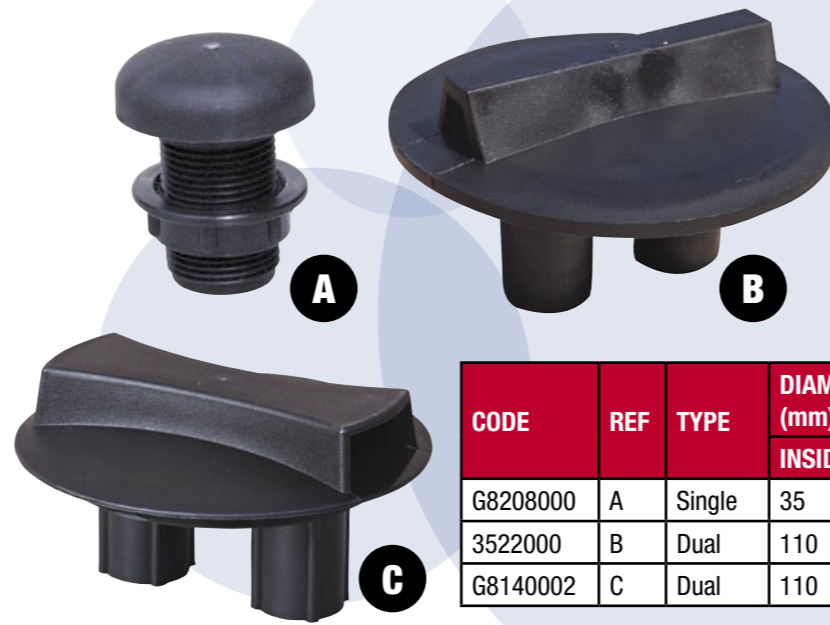


LIDS - MALE THREAD TYPE

Twin threaded lid with breather valve.

CODE	SIZE (MM)	DIAMETER (mm)		HEIGHT (mm)	LIST (ex GST)	LIST (inc GST)	CAT
		INSIDE	OUTSIDE				
G8146002	255	210	250	31	\$24.45	\$26.90	B
G8152002	355	313	355	29	\$31.90	\$34.20	B
G8158002	455	408	450	23	\$36.77	\$40.45	B

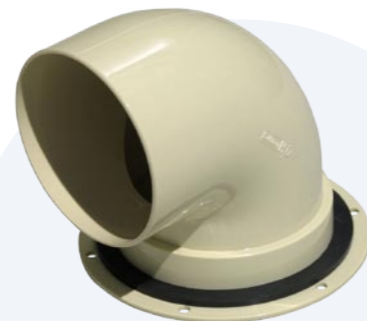
TANK ACCESSORIES



BREATHER VALVES

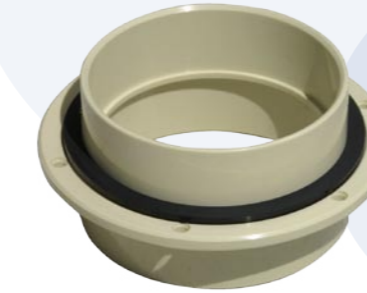
A. Single breather valve with locking nut.
B. Double sprung breather valve suit Arag lids
C. Labyrinth valve suit Geoline lids

CODE	REF	TYPE	DIAMETER (mm)		HEIGHT (mm)	LIST (ex GST)	LIST (inc GST)	CAT
			INSIDE	OUTSIDE				
G8208000	A	Single	35	55	80	\$11.23	\$12.35	B
3522000	B	Dual	110	140	80	\$18.59	\$20.45	B
G8140002	C	Dual	110	140	75	\$22.09	\$24.30	B



90mm Inverted Flange*

Code: PVC90MM



90mm Flange*

Code: PVC90MMFL



100mm Flange*

Code: PVC100MMFL



25mm Quick Union

Code: PPU25MF



50mm Tank Joiner Kit

Code: JJ50-KIT



100mm Flap Valve

Code: BFVALVE

* All flange fittings mount using 6 pre moulded holes and are supplied with a sealing rubber

ACCESSORIES



AQUASOURCE CONTROLLER

Code:
The Aquasource controller combines hydraulic and electronic components that detect water pressure and flow to supply water to the system on demand. It features a LED display panel that shows when the pump is running and when rainwater is available.



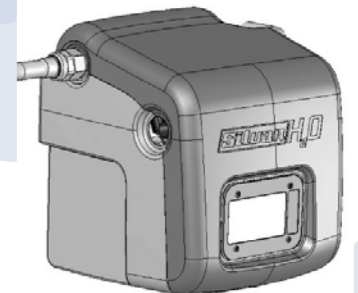
MOUNTING PLATE 280mm

Code: COVPU
Fits to 300mm tank opening for mounting pressure controller



TANK KIT SIGHT GAUGE

Ideal for fitting to all types of tanks including poly, fibreglass or steel. Supplied in kit form and includes fittings which insert into tank wall, fluorescent sight ball and EPDM transparent PVC hose which makes gauging tank contents easy.



Wallmount PVC Cover

Code: CWMSC



Pump Cover Stand Alone

Code: COVSAPSCSC

CODE	LENGTH SIZE (mm)	HOLE SIZE (mm) I.D.	LIST (ex GST)	LIST (inc GST)	CAT
BRA-1688041	1130	19	\$53.77	\$59.15	B